

DOUBLE-WALL S&F TANK

S&F DOUBLE-WALL TANK
Steel & FRP



S&F DOUBLE-WALL TANK

Domestic Share **NO.1** Cumulative Sales **20,000** units (As of Dec. 2012) Excellent in **Economy, Safety and Quality**

S&F Double - wall Tank is a truly innovative product; it has a double - wall structure consisting of a primary steel tank and a secondary FRP tank, and it is equipped with sensor for monitoring leakage. The seamless secondary FRP tank is manufactured using our advanced spray-up technology. ※FRP: Fiber-reinforced plastic

ECONOMY

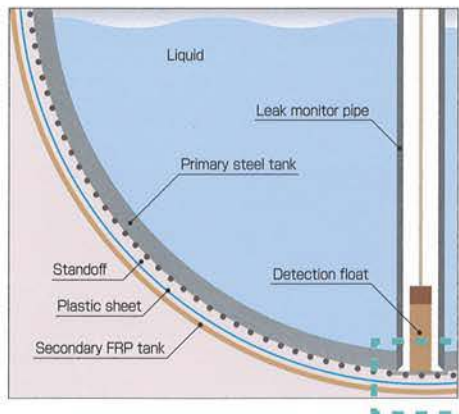
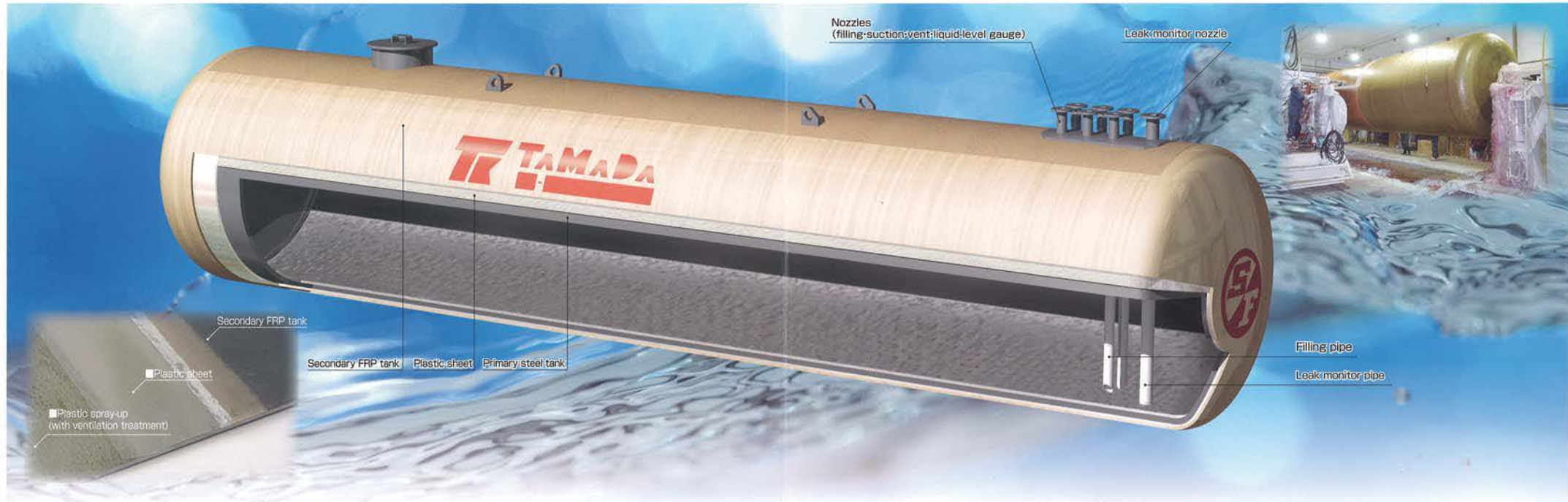
- ① Automatic production makes prices reasonable.
- ② Reduced construction costs and construction time due to elimination of a tank room

SAFETY

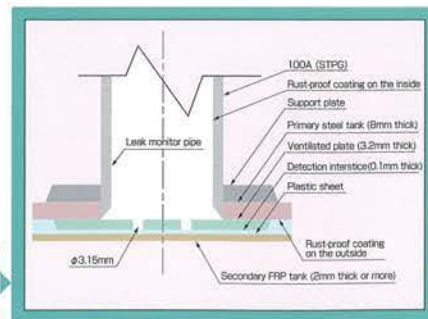
- ① Constant leakage monitoring
- ② Primary steel tank is leak proof by pressure test
- ③ Secondary FRP tank is KHK (Hazardous Materials Safety Techniques Association) certified
- ④ Capable to store alcohol blended fuels

QUALITY

- ① Measurement of tank wall thickness, pinhole check, water/air pressure and decompression test are conducted to ensure high performance.
- ② Highly durable FRP thickness
- ③ Pressure control throughout the installation
- ④ ISO9001 quality control



■ **Leak monitor** Leakage due to corrosion of the steel layer is detected before it causes soil contamination.



■ **Installation** It is possible to manufacture 120kl tanks in the plant and transfer them to the installation site.



SUPER SF DOUBLE-WALL TANK

Most advanced tank with added values

When used for many years, steel tanks may become rusty due to oxygen contained in water, that has been created by dew condensation and has accumulated at the bottom of the tank.

Our Super SF Double-wall Tank was developed to solve this problem. The bottom of the tank interior is given a special treatment — shot blasting, coating with anti-corrosion primer that contains our original TK-D powder, and coating of an FRP layer 1.5mm thick or more; thus, concerns about rusting due to water accumulation are completely dispelled.

In addition, the outside top of the tank is coated with plastic grains to prevent slippage so that workers can work safely even on a large tank with a diameter of two meters or larger.

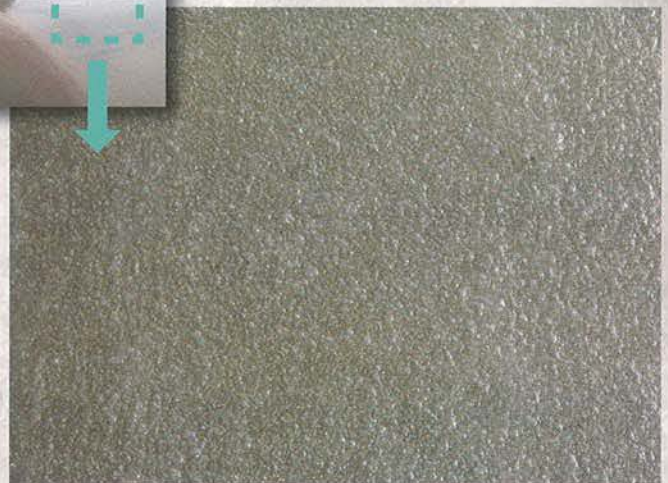
The outer layer, which is formed by spray-up FRP in our automatic production line, is perfectly seamless and highly secure.



Inside rust-proof treatment
(grit blasting / rust-proof primer coating / FRP coating)



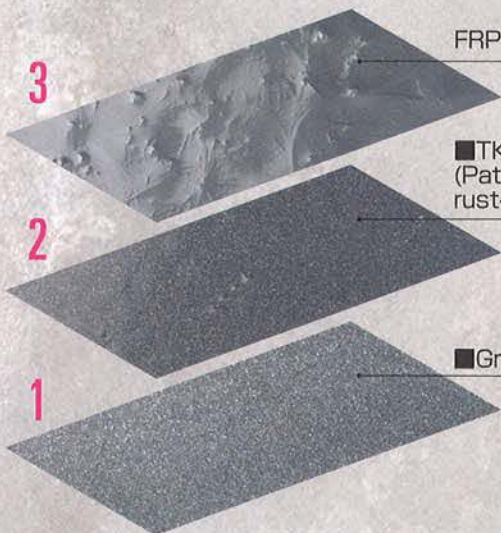
Non-slippage treated surface
Patent No.: P3776664



FRP layer min.1.5mm thickness

■TK-D powder
(Patent No.: P3776664)
rust-proof primer

■Grit blasting



Corrosion due to water accumulation at the bottom
of a tank after more than 40 years of use

Custom-made tanks

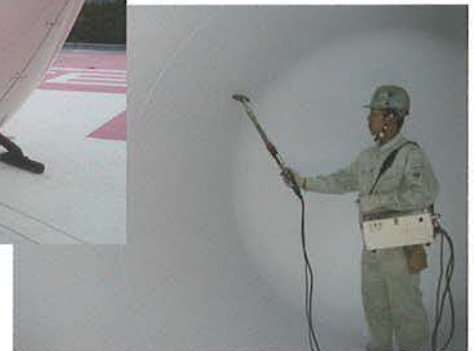
We produce custom-made tanks according to
your specifications.

Internal Epoxy Coating

Highly waterproof, solvent-resistant, chemical-resistant inner coating

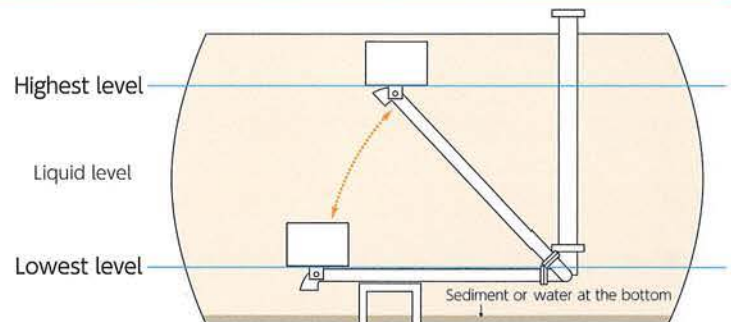
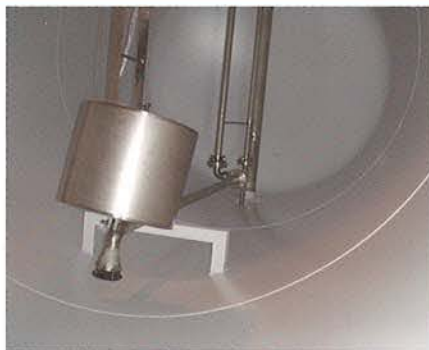
Tanks with epoxy coating are mainly used for the storage of aviation fuel, for which the utmost safety is required.

In recent years, more and more hospitals have been using air ambulance helicopters to meet the demands for emergency medicine and disaster response. We have therefore adopted white epoxy, which has no effect to stored jet fuel, for coating the entire internal surface of a tank. The tank is manufactured using our dependable technology, according to the Guidelines for Handling Jet Fuel stipulated by the Petroleum Association of Japan. The tank can be safely used for various fuels and solvents.



Floating Suction Unit

The suction unit is installed within storage tanks, and suctions liquid from a constant position near the surface; therefore, there is no need to worry about suctioning sediment or water accumulating at the bottom of the tank.



Stainless Steel Tank

Stainless steel tank for storing solvents

The stainless steel tank is highly durable and corrosion-resistant, so it is suitable for storing solvents and other liquids that require high-quality management. The tank's double-walled structure provides further safety. Pickling, degreasing and buff polishing are available.



Our Other Services

- Design and construction of gas stations
- Design and construction of oil storage plants
- Design and construction of airplane fuelling facilities
- Manufacturing and sales of earthquake-proof water tanks and water tanks for fire control
- Manufacturing of the DEPOT ANGEL compact steel basement
- Manufacturing of the AQUA in PIT circulation water tank
- Application of linings for underground tanks and pipes
- Sales and maintenance of fuel measurement instruments, flow meters, oil pumps, small tanks for private use, car wash machines, etc.
- Overseas technical partnership business

E-S46_Oil Tank Spec (5/5)

Dimensional data

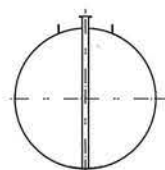
Capacity·Model	Weight(kg)	Length(mm)	diameter(mm)	Standard
25*	430	1,895	1,280	For waste oil
10S*	2,060	3,615		
20	3,600	6,968		
S*	4,290			
H0(10:10)	3,940			
25	4,630	8,492	2,100	
H(12.5:12.5)	4,630			
S*	4,990			
30	5,330	10,016		Original standard (t8)
X(10:20)	5,330			
H(15:15)	5,330			
T(10:10:10)	5,780			
20	3,360	5,477		
HL(10:10)	3,780			
SL*	4,580			
30	5,000	7,806	2,400	
XL(10:20)	5,000			
HL(15:15)	5,000			
TL(10:10:10)	5,570			
22	3,410	5,562		
HL(11:11)	3,830			
SL*	4,200			
28	4,630	7,086		
HL(14:14)	4,630			
SL*	5,800			
40	6,220	10,134	2,400	Japan Petroleum Association standard (t8)
XL(10:30)	6,220			
HL(20:20)	6,220			
TL(10:10:20)	6,790			
SL*	6,590			
48	7,020	11,658		
XL(16:32)	7,020			
HL(24:24)	7,020			
TL(16:16:16)	7,580			

*Single compartment tank

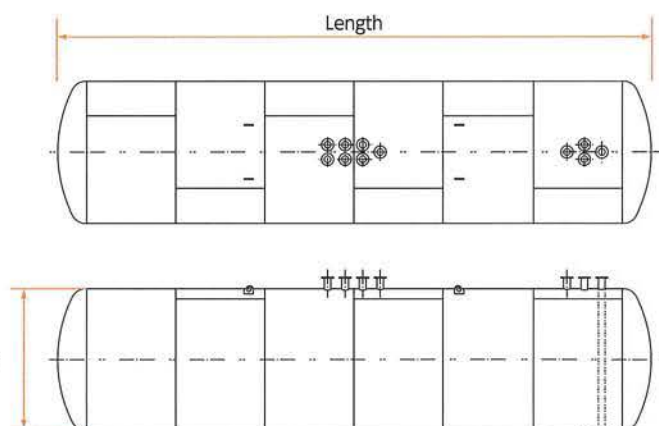
Capacity·Model	Weight(kg)	Length(mm)	diameter(mm)	Standard
45*	990	3,536	1,300	
55*	1,170	4,356		
65*	1,290	4,494	1,400	Public building equipment standard
75*	1,400	4,583		
85*	1,550	5,203	1,500	
10S*	2,530	5,742	1,600	
12S*	2,730	5,469	1,800	
13S*	2,900	5,869		
15S*	3,290	6,769	1,800	Public building equipment standard
18S*	3,710	7,308		
20S*	4,030	8,008	1,900	
25S*	4,750	9,047	2,000	
30S*	5,240	9,024	2,200	
50S*	7,300	10,264	2,700	
60S*	8,080	10,358	2,950	
70S*	8,880	10,457		
75S*	9,090	10,728	3,200	Original standard (t9)
80S*	9,820	11,677		
100S*	11,720	14,115		

*Single compartment tank

※Weights are calculated values based on design



diameter



※The specifications are subject to change without notice.



Tamada Industries, Inc.

Head Office Ha 61-1 Muryoji-machi, Kanazawa, Ishikawa
920-0332 Japan
TEL: +81(0)-76-267-4888 FAX: +81(0)-76-267-5415

Manufacturing Division Ha 61-1 Muryoji-machi, Kanazawa, Ishikawa
920-0332 Japan
TEL: +81(0)-76-267-4888 FAX: +81(0)-76-267-4449

E-mail office@tamada.co.jp
URL http://www.tamada.co.jp/

Tokyo Branch/Tokyo Office
Pelican Bldg. 2F, 3-3-3 Nishishinbashi, Minato-ku,
Tokyo 105-0003 JAPAN
TEL: +81(0)-3-5401-3689 FAX: +81(0)-3-5401-3632

Kanto Office
174-3 Fukahodo, Kanuma, Tochigi 322-0302 Japan
TEL: +81(0)-289-71-3336 FAX: +81(0)-289-75-5588

Northern Japan Branch/Sendai Office
Little Mermaid Bldg. 2F, 3-9-8 Izumi-chuo, Izumi-ku,
Sendai, Miyagi 981-3133 JAPAN
TEL: +81(0)-22-371-3902 FAX: +81(0)-22-371-3926

Hokkaido Office
4-7-8 Satozuka3Jo, Kiyota-ku, Sapporo,
Hokkaido 004-0803 JAPAN
TEL: +81(0)-11-887-2424 FAX: +81(0)-11-887-2425

Kansai Branch/Osaka Office
Fujitaka Bldg. 6F, 1-3-13 Minamimorimachi, Kita-ku,
Osaka-shi, Osaka 530-0054 JAPAN
TEL: +81(0)-6-6313-1577 FAX: +81(0)-6-6313-1578

Western Japan Branch/Fukuoka Office
Esu-kowa Bldg. 1, 1-1-24 Enokida, Hakata-ku,
Fukuoka-shi, Fukuoka 812-0004 JAPAN
TEL: +81(0)-92-292-7026 FAX: +81(0)-92-292-7034

Hiroshima Office
Nakahi Central Bldg. 501, 3-3-18 Nakahi-machi,
Nishi-ku, Hiroshima-shi, Hiroshima 733-0012 JAPAN
TEL: +81(0)-82-231-0695 FAX: +81(0)-82-231-0749

Chubu Branch/Kanazawa Office
Ha 61-1 Muryojimachi, Kanazawa, Ishikawa
920-0332 JAPAN
TEL: +81(0)-76-267-4888 FAX: +81(0)-76-267-5415

Toyama Office
87-1 Kurose, Toyama-shi, Toyama 939-8213 JAPAN
TEL: +81(0)-76-424-4844 FAX: +81(0)-76-425-1178

Fukui Office
2-117 Toiyacho, Fukui-shi, Fukui 918-8231 JAPAN
TEL: +81(0)-776-23-7784 FAX: +81(0)-776-27-7516

Nagoya Office
Sugino Bldg. 2F West, 1-55-2 Suyama-cho, Mizuho-ku,
Nagoya, Aichi 467-0066 JAPAN
TEL: +81(0)-52-858-1917 FAX: +81(0)-52-858-1918

Niigata Office
Beruku Shimoyama A-1, 5-122 Simoyama, Nagaoka,
Niigata 940-2115 JAPAN
TEL: +81(0)-258-20-5771 FAX: +81(0)-258-20-5772

Hokuriku Plant/FW Plant
Ha 61-1 Muryojimachi, Kanazawa, Ishikawa
920-0332 JAPAN
TEL: +81(0)-76-267-4888 FAX: +81(0)-76-267-4478

Kanto Plant
174-3 Fukahodo, Kanuma, Tochigi 322-0302 JAPAN
TEL: +81(0)-289-71-3337 FAX: +81(0)-289-74-5088

Kyushu Plant
1196-1 Shichijo-machi Sosaki, Kikuchi, Kumamoto
861-1344 JAPAN
TEL: +81(0)-968-26-3550 FAX: +81(0)-968-26-3551



ISO9001: Certified in 2008
Fire control water tank, earthquake resistant
water tank, S&P double wall tank